



# MONTHLY MEMBERSHIP PROGRESS REPORT

District 4 A2

Results as of: 05/31/2018

GMT: HOWARD HUDSON

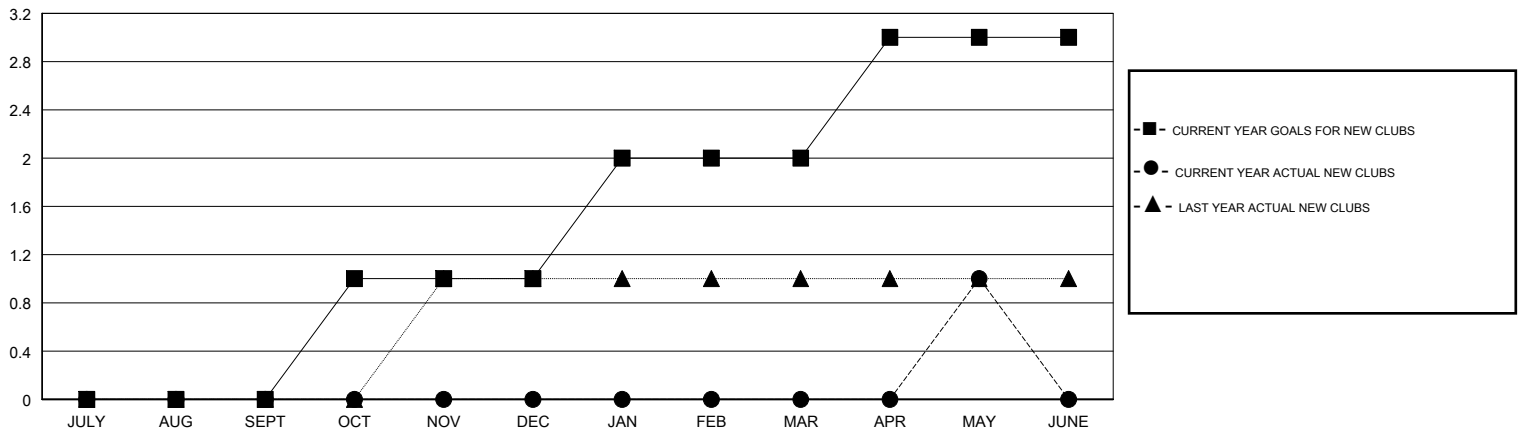
LOCATION CALIFORNIA

GMT CA

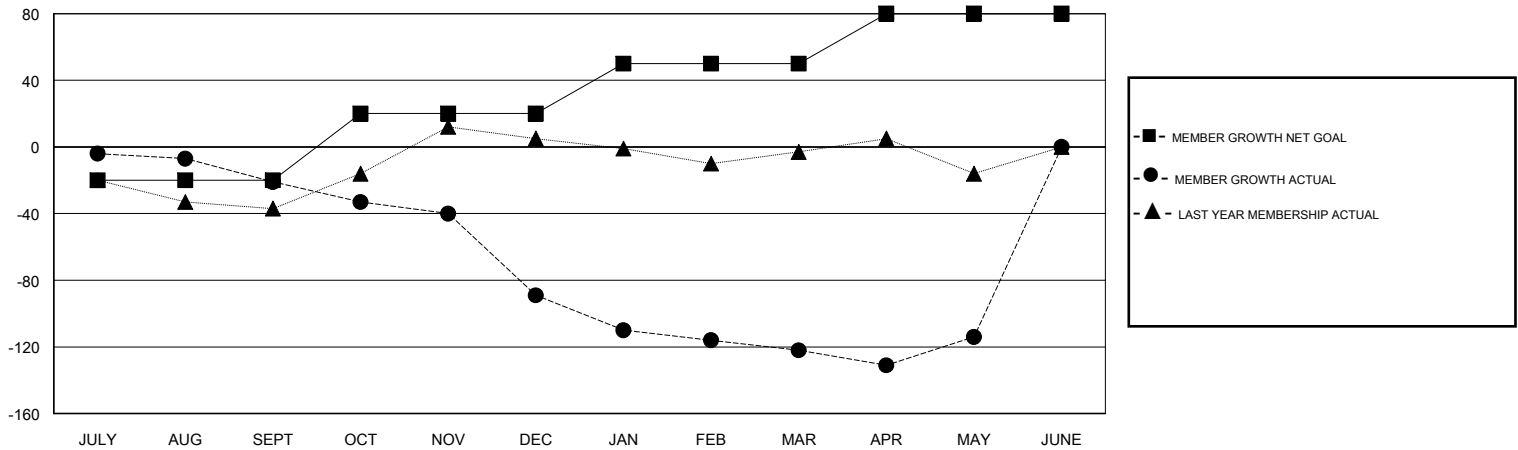
Clubs			
RESULTS FOR 2017-2018			
QUARTER	NEW CLUB GOAL	NEW CLUBS	DROPPED CLUBS
JULY/AUG/SEPT	0	0	0
OCT/NOV/DEC	1	0	2
JAN/FEB/MAR	1	0	0
APR/MAY/JUNE	1	1	0

Members			
RESULTS FOR 2017-2018			
QUARTER	MEMBER GROWTH NET GOAL	MEMBER GROWTH ACTUAL	DROPPED MEMBERS ACTUAL (including transfers)
JULY/AUG/SEPT	-20	56	67
OCT/NOV/DEC	40	30	93
JAN/FEB/MAR	30	35	66
APR/MAY/JUNE	30	48	39

GOALS AND ACTUAL NEW CLUBS CUMULATIVE



GOALS AND ACTUAL MEMBERS CUMULATIVE



DROPPED CLUBS: 2	46 CLUBS OF 64 ADDED 1 OR MORE NEW MEMBERS	<u>GENDER DISTRIBUTION</u> MALE 1,407 (70.63%) FEMALE 585 (29.37%) Women Percentage Fiscal Year Goal: 26%
<u>DROPPED MEMBERS</u> DECEASED 32 CLUB CANCELLED 39 OTHER 194 TOTAL 265	<a href="#">CLICK HERE FOR CUMULATIVE MEMBERSHIP DATA</a>	TOTAL FAMILY UNIT MEMBERS 260 FAMILY MEMBERS PAYING HALF DUES 136